

# Aluminum Window Installation Instructions

Replacement/New Construction application

Note: window openings should always be non load-bearing



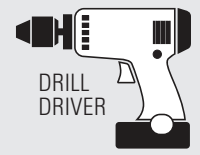
## REQUIRED TOOLS



SEALANT



#8 X 2" PAN HEAD SCREWS



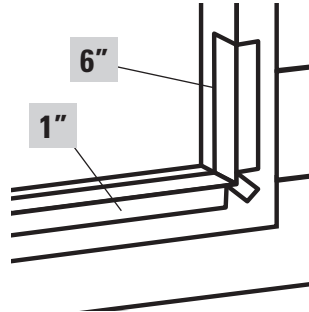
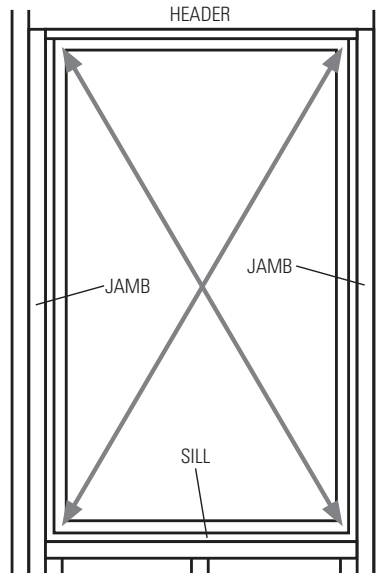
DRILL DRIVER



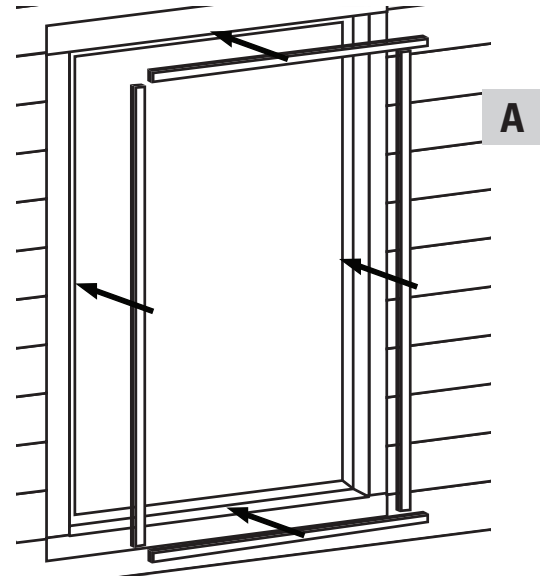
BATT-TYPE INSULATION



TAPE MEASURE

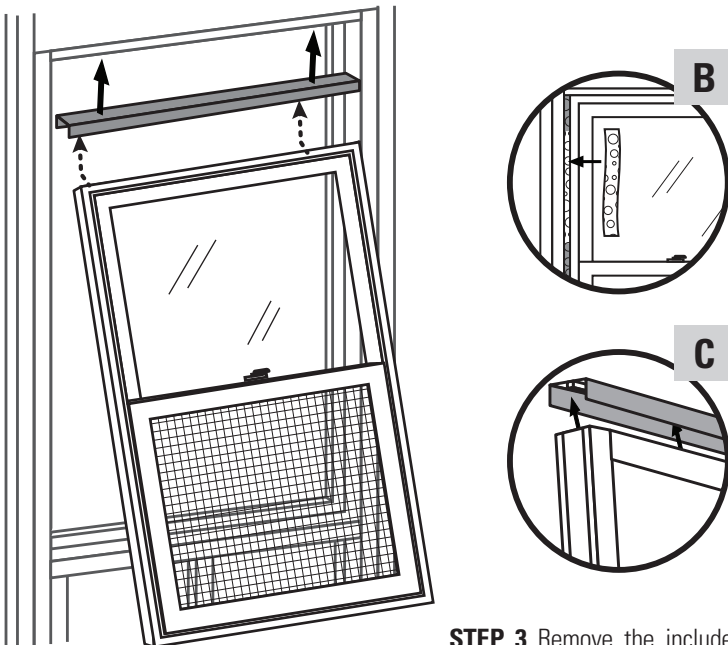


Note: Cut tape 12" longer than the width of the opening so it extends up each side by approx 6". The flashing tape does not have to extend all the way to the interior of the framing.

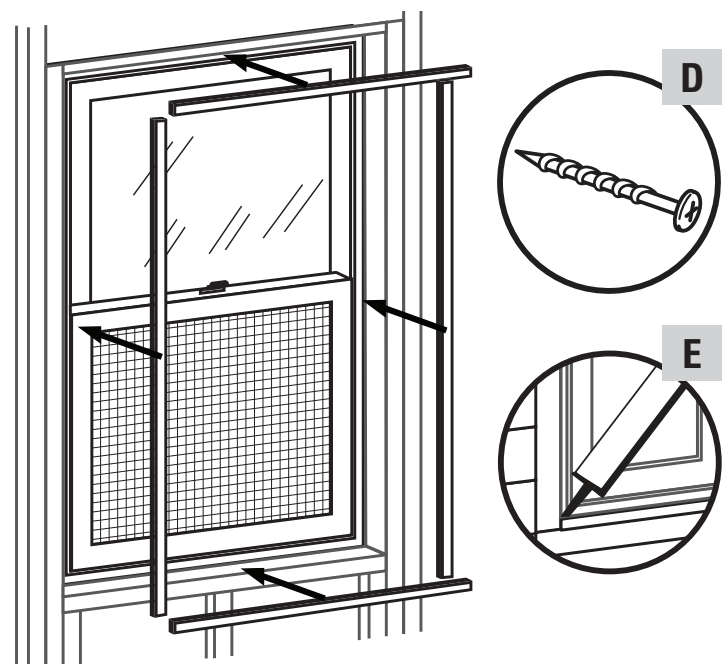


**STEP 1.** Check that the rough wall opening is square (diagonals measure must match). The rough opening width and height should be at least 1/2" larger than the actual window size. Next, cut a piece of flashing tape (*not included*) 12" longer than the opening width. Apply tape at the bottom of the opening so that it overhangs 1" to the exterior and 6" up each side of the opening, as shown.

**STEP 2.** If you are installing from the outside, prepare and install four 1" x 1/2" interior window stops (*not included*) towards the inside of the window rough opening (fig A). These will hold the window in place during the installation and will serve as part of your finish interior trim material.



**STEP 3** Remove the included aluminum head expansion jamb from the top of the window and install across the top of your rough opening so that it butts up against the interior stop that was previously installed in STEP #2. Secure the expansion jamb with panhead screws (*not included*). Next, insulate around the perimeter of the window with a 1-1/2"-2" strip of batt type insulation (*not included*) (fig. B). **CAUTION** Using expanding foam sealants may make the window too tight in the opening and can negatively impact the operation of the window. Finally, angle the window sash into the expansion jamb and lower into the rough opening (fig. C). Shim around the window if necessary to ensure the window operates smoothly and is plumb, square and level.



**STEP 4** Secure window through the sidewall jambs using panhead screws (fig. D) (*not included*) fastened every 4"- 6" starting up/down from each corner. **CAUTION** Be careful NOT to drill through the window balances that run inside the sidewall jambs. Next, install a series of exterior stops (*not included*) tightly against the sash and window. Finally, apply sealant (*not included*) to the perimeter of the exterior of the window between the rough opening and sash (fig. E) and then seal the interior of the window in the same way. Finish with exterior and interior trim, if necessary, to complete the installation.